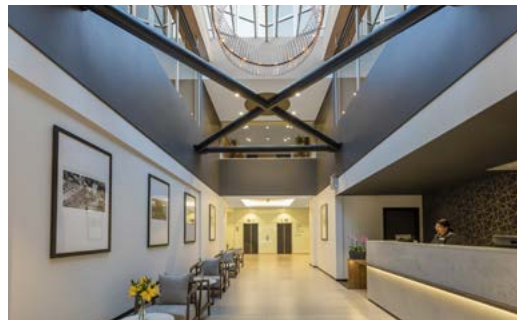


# OAKS WELLINGTON HOTEL



Oaks Wellington Hotel offers 4.5 star modern accommodation in the heart of Wellington's entertainment precinct. Boasting spectacular views, within close proximity to the waterfront, the hotel features a range of convenient amenities including an on-site restaurant and bar, meeting facilities, car parking and gym facilities

The hotel is fresh and contemporary in its look, paying homage to the building's history providing guests with a beautiful mix of history and style. Originally built in 1922 as an iconic Ford vehicle assembly plant it was then repurposed and now stands today transformed into a trendy and modern 9 storey hotel for guests to enjoy.

## Proximity Information

- |  |      |                              |       |
|--|------|------------------------------|-------|
| • St James Theatre                                   | 5m   | • Wellington Waterfront Walk | 650m  |
| • Takina Wellington Convention and Exhibition Centre | 400m | • Mount Victoria             | 800m  |
| • Museum of New Zealand Te Papa                      | 500m | • Wellington Cable Car       | 1.9km |
|  |      | • The Weta Cave              | 7.3km |

## Hotel Features

- Restaurant and bar
- Gym facilities
- Business hub
- Function and meeting spaces
- Car parking

## Apartment Features

- Modern hotel rooms, studio and two bedroom apartments
- Stunning city views within close proximity of waterfront
- Balconies on selected rooms
- Air conditioning
- Internet access

# OAKS WELLINGTON HOTEL PROPERTY PROFILE

Room type	Number of rooms (NB dual key apartments)	Bedding configurations	Number of rooms with all split beds	Number of sofa beds
Hotel Room	120	1K or 2S	87	0
Hotel Room City View	90	1K or 2S	25	0
Studio	9	1K or 2S	5	0
Studio Executive	7	1K or 2S	3	1
2 Bedroom	4	2K or 1K + 2S or 4S	0	0
2 Bedroom City View	3	2K or 1K + 2S or 4S	0	0

Room type	Max pax allowed at base rate	Max pax allowed in room	Room size (m <sup>2</sup> )	Total number of rooms with a	
				Bath	Walk in shower
Hotel Room	2	2	18-25	N/A	All
Hotel Room City View	2	2	21-26	N/A	All
Studio	2	2	20-25	N/A	All
Studio Executive	2	3	26-32	N/A	All
2 Bedroom	4	4	43	N/A	All
2 Bedroom Executive	4	4	43	N/A	All

Resort Features	Yes	No	Comments
24hr reception	•		
Concierge	•		
Foreign Exchange desk	•		
Lobby café & bar		•	
Vending machine		•	
Room service	•		
Express check-in	•		
Express check-out	•		
Car park	•		
Valet car parking		•	
Same day laundry	•		
Babysitting service	•		External provider
Business facilities	•		
BBQ facilities		•	
Conference / meeting facilities	•		
Broadband facilities	•		
Daily newspaper	•		
Swimming pool		•	
Spa		•	
Sauna		•	
Gymnasium	•		
Safety deposit boxes	•		
Daily room service	•		Additional fee
Tour desk	•		Front desk can book all tours
Disabled facilities	•		
Multilingual staff	•		
Limousine service	•		On request - fee will apply
Onsite ATM/other cash machines		•	
All major credit cards accepted	•		

Apartment Features	Yes	No	Comments
Lounge & dining area	•		
Spa		•	
Apartments with 2 + bathrooms		•	
Private balcony	•		Selected rooms on Level 9
Is smoking allowed on balcony?		•	
Outdoor furniture	•		
Air conditioning	•		
Keycard room access	•		
In-room safe	•		
Cooktop	•		Level 9 rooms only
Oven		•	
Refrigerator	•		
Dishwasher		•	
Microwave	•		Level 9 rooms only
Washing machine & clothes dryer		•	
Iron & ironing board	•		
Broadband access	•		
Modem & facsimile lines in rooms		•	
ISD/STD direct dial phones		•	
Voicemail message service	•		
International power converters	•		Subject to availability
Remote control colour TV	•		
DVD player		•	
Sky TV	•		
Tea & coffee making facilities	•		
Sound system with CD player		•	
AM/FM radio alarm clock	•		
Hairdryer & exclusive toiletries	•		

**OAKS WELLINGTON HOTEL**  
 89 Courtenay Place, Te Aro, Wellington, 6011  
 Wellington@theoaksgroup.co.nz  
 T +64 4801 0390

**oakshotels.com.au**